



# PR-40G-M

## 40 Gb/s Photoreceiver Module

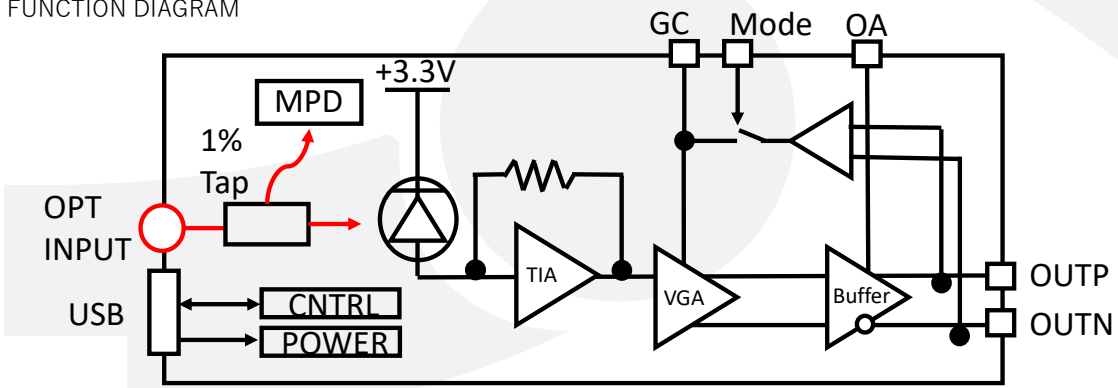


- 高速フォトレシーバーモジュールです。
- このモジュールは、40Gbpsまでのデジタルアプリケーションで使用できます。
- パルス振幅変調 (PAM) 検出に最適です。
- 単一のUSBポートから電源投入リモコンも同じUSBポートです。
- 35GHzまでの帯域幅調整も可能です。

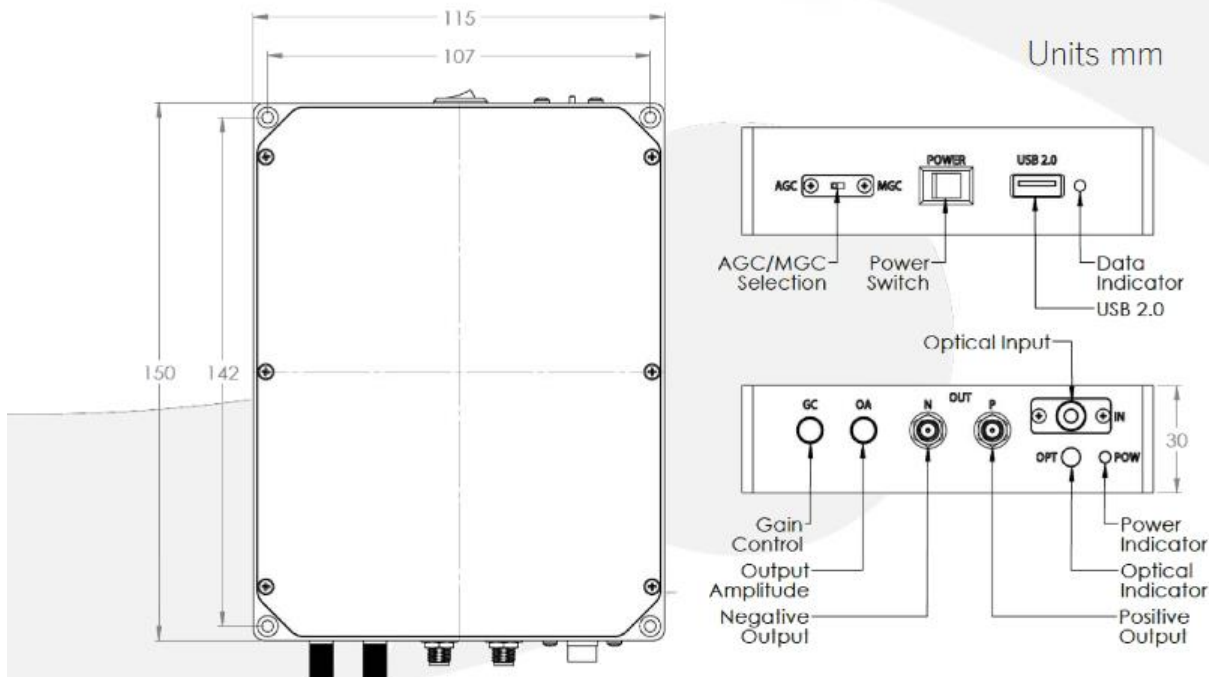
- FEATURES
- Up to 32 GHz Bandwidth
  - MGC or AGC Mode
  - USB Powered
  - Remote Control via Command Set
  - Bandwidth Adjustment

- USE IN
- 40 Gbps DPSK
  - PAM-4/QAM-16
  - 30 GHz RF over fiber link

FUNCTION DIAGRAM



Mechanical Drawing





## SPECIFICATIONS

Optimized Operating Wavelength	1250 nm to 1650 nm
Optical Input Level	+7 dBm max.
S21 3 dB Bandwidth	30 GHz typ.
Differential Conversion Gain	3000 V/W typ.
Optical Return Loss	30 dB typ.
Optical PDL @ 1550 nm	0.25 dB max.
Output Return Loss	<-10 dB up to 25 GHz
Differential Output Voltage	Up to 1800 mVpp
Impedance	50 Ω
Output Coupling	DC (external AC coupling required)
Equivalent Input Noise Density	32 pA/√Hz max.
Noise Equivalent Power (NEP)	17 pW/√Hz @ 1GHz

## GENERAL

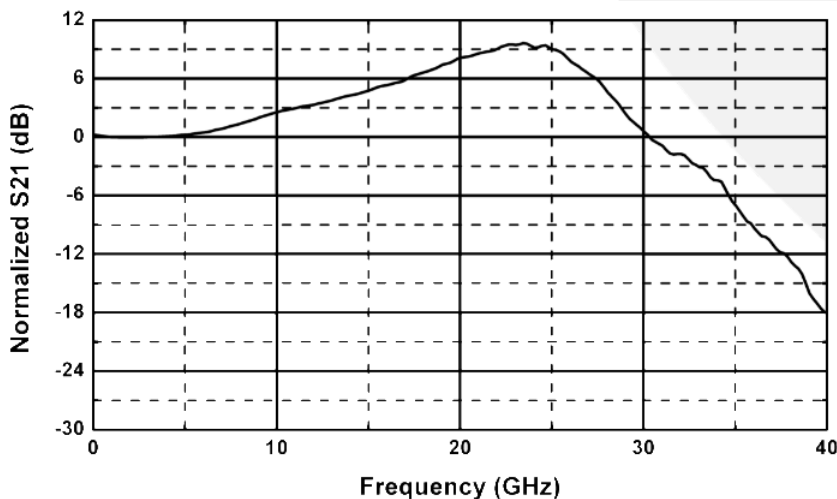
Operating Temperature	0°C to +50 °C
Storage Temperature	-55 °C to +85 °C
Power Supply Requirements	+5 VDC through USB
Optical Connector	FC/APC
Electrical Output Connector	2.92 mm, Female (K/SMA Compatible)
Local Alarm	LED: Optional Input Power
Remote Alarms	RS-232 Interface (optional)
Dimensions	150mm x 115mm x 30mm
Housing	Precision Mach, Anodized Aluminum

## MECHANICAL

Input Optical Power	10 mW
ESD, Input and Output Pins	1000 V min.
ESD, All Other Pins	2000 V min.
Latch Up	JESD78 Class 2
Humidity	95%

## ABSOLUTE MAXIMUM RATINGS

## S21 Graph



詳しい問い合わせ：有限会社アミスター  
 〒146-0085 東京都大田区久が原1-5-7-302  
 TEL:03-6410-4277 FAX:03-6410-4278  
 E-mail:info@amistar.jp